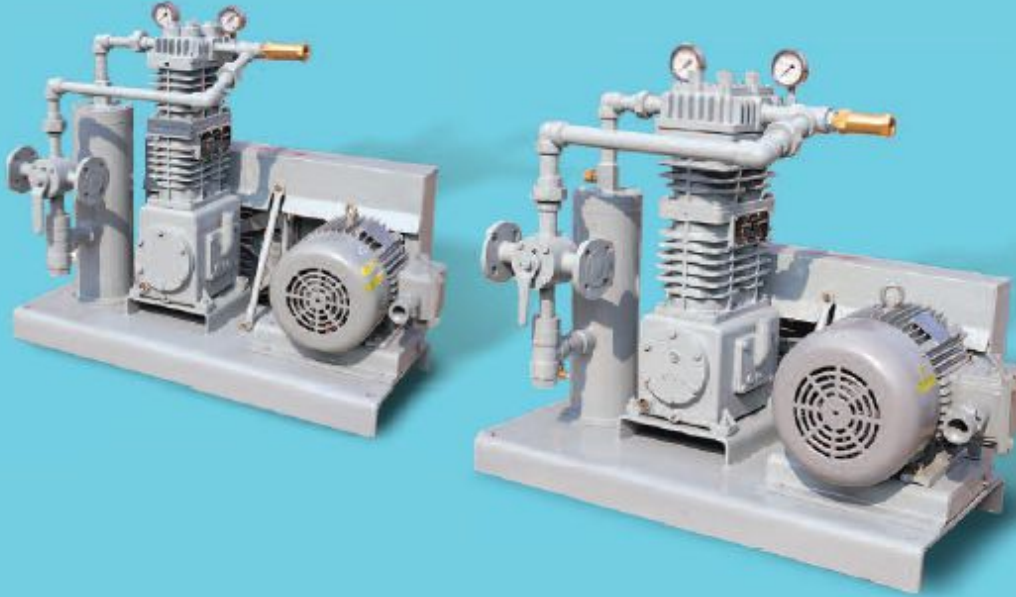


# GAS COMPRESSOR

WGCL-7122 (LPG)  
WGCL-7222 (NH<sub>3</sub>)



## MATERIAL

NO.	PART NAME	MATERIAL	NO.	PART NAME	MATERIAL
1	CRANK CASE	FCD45	6	CROSS PISTON	AC8B
2	CROSS CYLINDER	FCD45	7	CONNECTING ROD	AL
3	COMPRESSOR CYLINDER	FCD45	8	SUCTION VALVE	09CH17N-3SC
4	HEAD	FCD45	9	DISCHARGE VALVE	09CH17N-3SC
5	CRANK SHAFT	FCD50	10	ROD PACKING	PTFE+CARBON

## SPECIFICATION

PART	7.5HP	15HP
MOTOR CAPACITY	7.5 HP	15HP
CONNECTION	25A JIS-20K RF	40A JIS-20K RF
PISTON DIAMETER	Ø80	Ø105
STROKE	65mm	78mm
MOTOR TYPE	Ex D2G4	Ex D2G4
MOTOR PULLEY	B 3-LANE 6.5"	B 3-LANE 6.5"
COOLING PULLEY	B 3-LANE 16"	B 3-LANE 16"
REVOLUTION PER MINUTE	707 rpm	713 rpm
DISCHARGED VOLUME	370 ℓ /min	770 ℓ /min
FILLING TIME OF 10 TON LPG	55~70 min	26~34 min

- Application :  
Transfer & collect gas, which compressed gas and generate differential pressure from tank lorry to storage tank
- Hydrostatic test pressure : 30kg/cm<sup>2</sup>
- Pneumatic test pressure : 22kg/cm<sup>2</sup>
- Fluid : LPG, NH<sub>3</sub>

※ REMARK : 1.MATERIAL IS TO BE CHANGED IN CASE OF NH<sub>3</sub> / 2.PLEASE CONTACT US WHEN APPLYING FOR OTHER GASES

※참고 : 1.암모니아용일 경우 일부 재질을 변경함. / 2.다른 가스 용도로 사용할 경우 당사로 연락바람.